



SuperSystems
incorporated

1500 VRF USER'S MANUAL

Super Systems Inc.
7205 Edington Drive
Cincinnati, OH 45249
Ph : 513-772-0060
Fax: 513-772-9466
www.supersystems.com

Super Systems Inc.

USA Office

Corporate Headquarters:

7205 Edington Drive

Shipping Address:

7245 Edington Drive

Cincinnati, OH 45249

Phone: (513) 772-0060

<http://www.supersystems.com>

Super Systems Europe

Unit E, Tyburn Trading Estate,

Ashold Farm Road, Birmingham

B24 9QG

UNITED KINGDOM

Phone: +44 (0) 121 306 5180

<http://www.supersystemseurope.com>

Super Systems México

Sistemas Superiores Integrales S de RL de CV

Acceso IV No. 31 Int. H Parque Industrial

Benito Juarez

C.P. 76120 Queretaro, Qro.

Phone: +52 442 210 2459

<http://www.supersystems.com.mx>

Super Systems China

No. 369 XianXia Road

Room 703

Shanghai, CHINA

200336

Phone: +86 21 5206 5701/2

<http://www.supersystems.cn>

Super Systems India Pvt. Ltd.

A-26 Mezzanine Floor, FIEE Complex,

Okhla Indl. Area, Phase – 2

New Delhi, India 110 020

Phone: +91 11 41050097

<http://www.supersystemsindia.com>

Contents

Overview and Set Up 3

Spare Parts 4

VRF Electrical Drawings and Plumbing Connections..... 5

Overview and Set Up

The 1500 VRF (P/N 13563) is a complete carbon control unit with a touch screen operator interface.

There are three indicators on the front of the enclosure. When the unit is powered on, the white light labeled “Control Power On” will be lit. During a burnoff, the green light above the burnoff air flow meter will be lit. The red switch labeled “Process Alarm” allows the operator to silence the unit if it is alarming.

For information on wiring the probe mV and probe thermocouple to the unit, please reference the VRF 1500 electrical drawings in this manual.

Connect the ports on the side of the electrical enclosure to the probe using silicone tubing. Connect tubing from the fitting on the side of the electrical enclosure marked “Reference Air” to the “Ref. Air” port on the probe. A connection should also be made between the “Burnoff Air” fitting and the “B.O.” fitting on the probe. Please see the 1500 VRF plumbing connections diagram within this manual. There is a barb fitting on the stainless steel well on the heated probe. This is the vent, which needs to be routed to an appropriately safe location.

The flow of the reference air and burnoff air can be adjusted using the corresponding flow meters on the front of the unit.

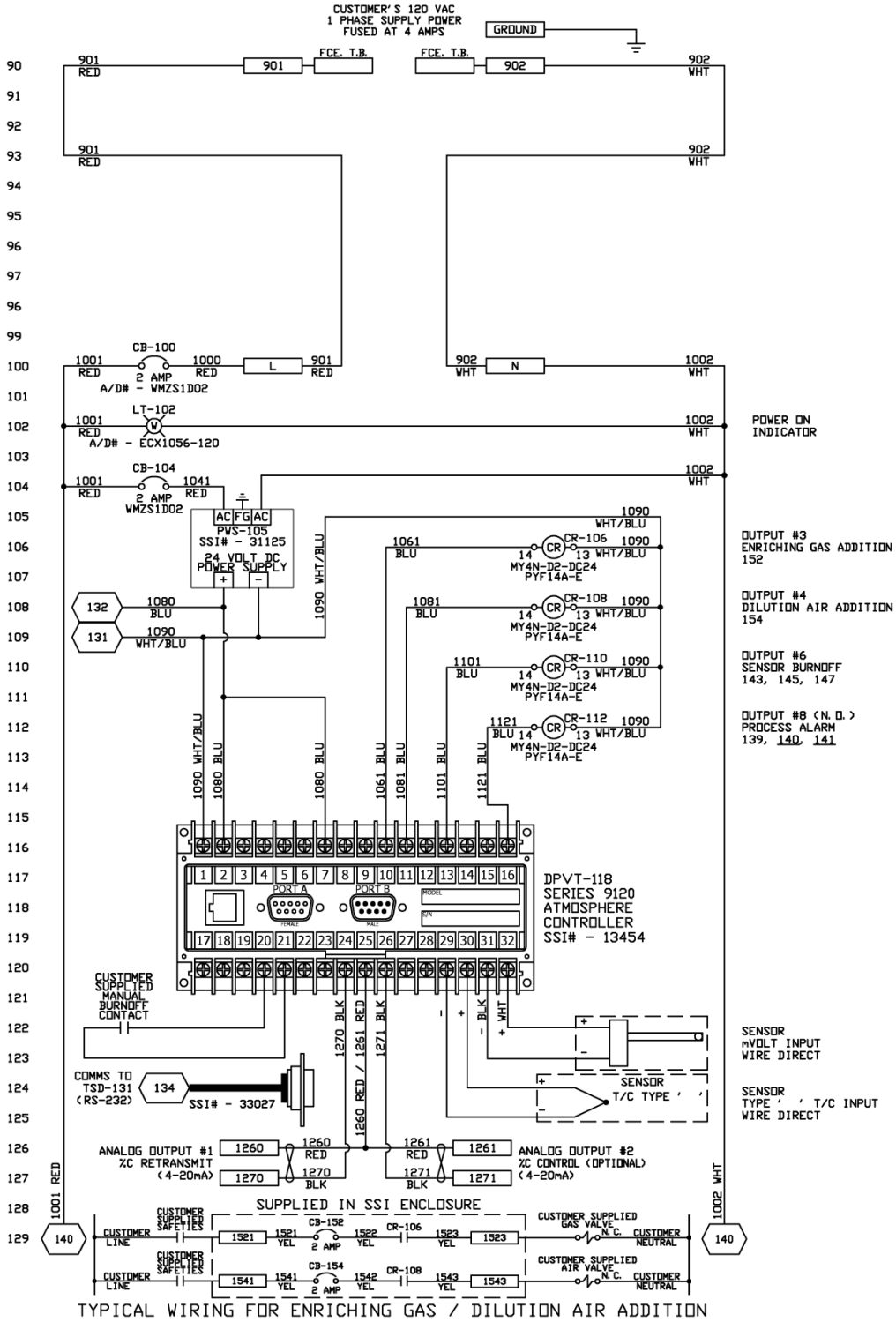
For information on the touch screen operator interface, please reference the *9120 With Touch Screen Interface User’s Manual*. For information on the probe, please reference the *Gold Probe Instruction Manual*.

Spare Parts

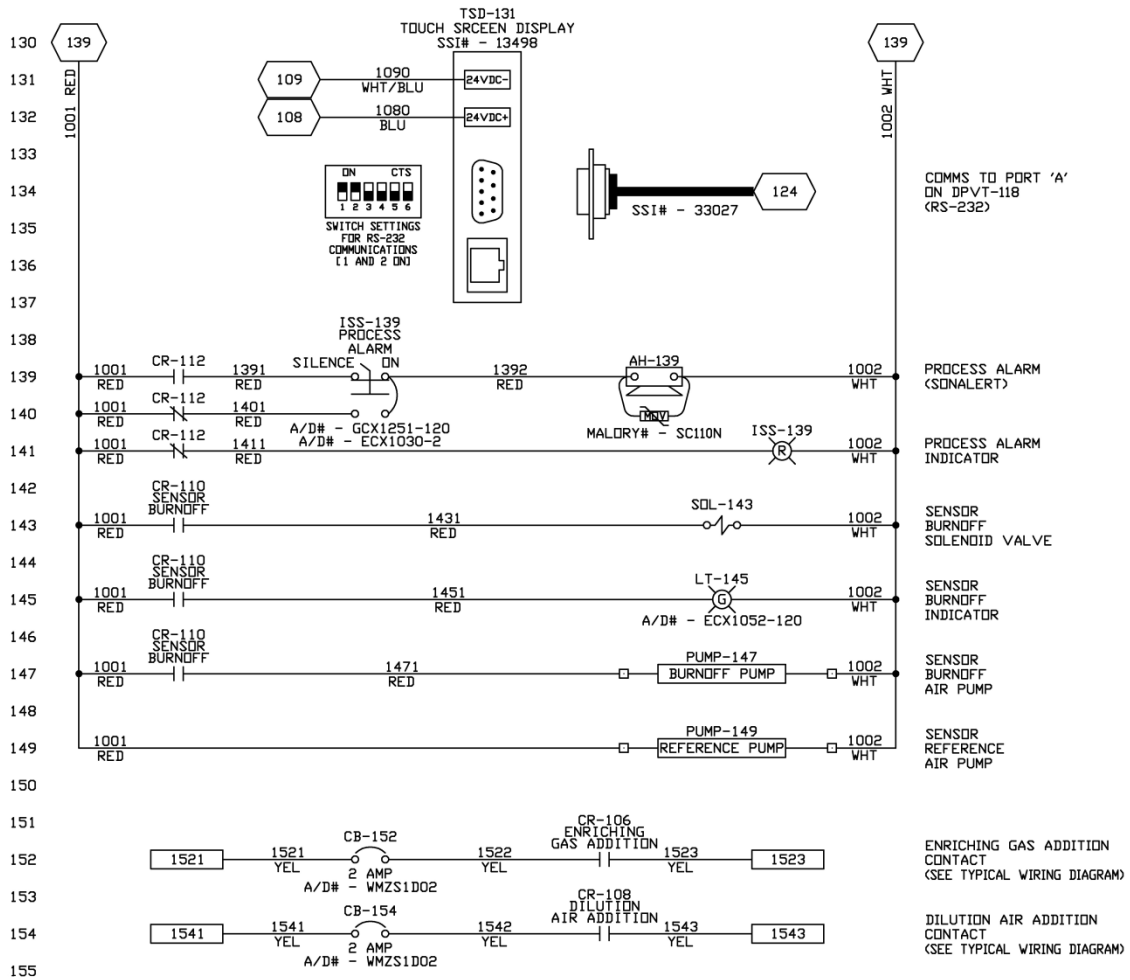
The following is a list of spare parts recommended for the 1500 VRF.

P/N	Description
31125	Power Supply 24V DC
37120	Pump - Reference Air
37138	Valve, Solenoid, 3-Way
37177	Pump - Sample / Burnoff Air
13454	Series 9120 Controller
36013	Flowmeter, 0.2 to 2 SCFH
36028	Flowmeter, 2 to 20 SCFH
31604	SD Flash Card
13498	3.5" Color Touch Screen

VRF Electrical Drawings and Plumbing Connections

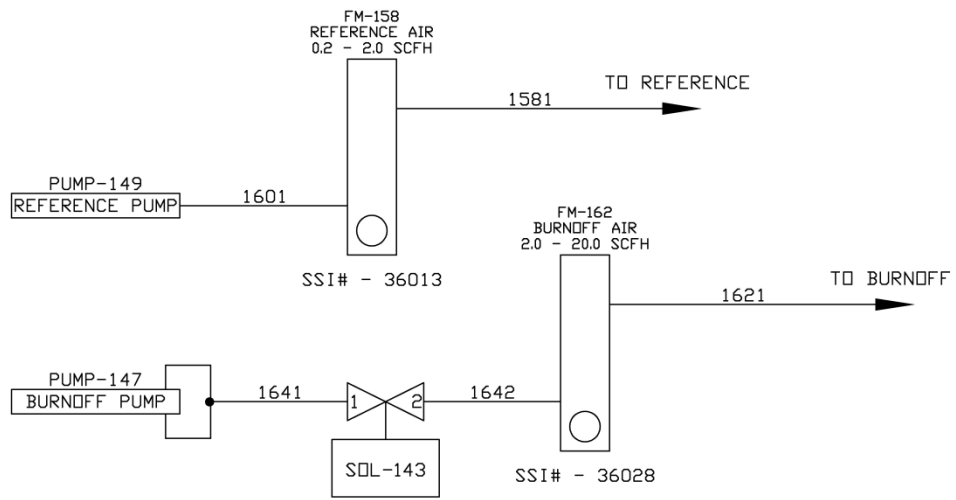


VRF Electrical Drawing 1



VRF Electrical Drawing 2

156
157
158
159
160
161
162
163
164
165
166
167
168
169



VRF 1500 Plumbing Connections

Revision History

Rev.	Description	Date	MCO #
-	Initial Release	5-8-2012	2099