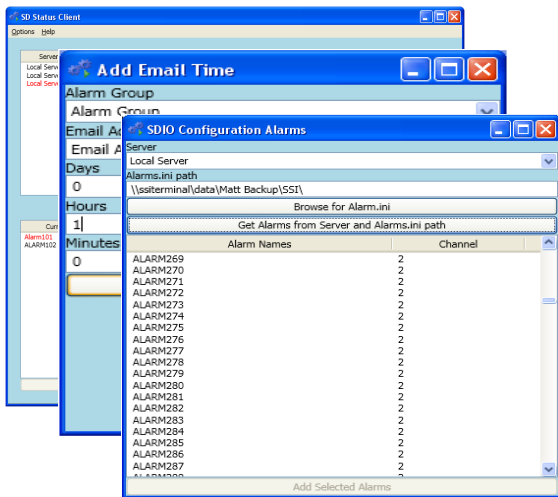




## Features & Functions

SDStatus monitors the status of specified SDIO servers, identifies when devices are nonresponsive or potentially malfunctioning, and provides alerts via email as defined by the user. SDStatus is installed as a standalone service with SuperDATA.



- Monitors selected servers for downtime
- Provides programmable email alerts when defined events take place
  - Emails can be limited to certain times of the week
  - Emails can be set up to be sent after an alarm has been on for a certain amount of time
- Monitors for alarm conditions
- Can monitor multiple servers and devices, all defined by the user

### Alarm Types

- A **Bit Alarm** starts when a selected bit is on or off (as defined by the user).
- A **Slot Alarm** takes place when the value of a selected slot within a channel is greater than, less than, or equal to a value defined by the user.
- A **Watchdog Alarm** is set to start when a selected slot's value does not change within a certain amount of time.
- An **"Unable to Contact Server" Alarm** is activated when SDStatus is unable to find the data for a server.
- A **Bad Channel Alarm** results when SDIO is functioning properly but is unable to communicate with the instruments set up

