

OR □

DENOTES TERMINAL BLOCK

**SUPER SYSTEMS INC.**  
(800) 666-4330  
www.supersystems.com

1 - 24VDC (COM)	22 - SLAVE 2 RS485 (+)
2 - 24VDC (+)	23 - SLAVE 2 RS485 (-)
3 - RS485 RT (-)	24 - 4-20mA OUT 1 (-)
4 - RS485 RT (+)	25 - 4-20mA OUT COM (+)
5 - SLAVE 1 RS485 (+)	26 - 4-20mA OUT 2 (+)
6 - SLAVE 1 RS485 (-)	27 - ANALOG IN 3 (+)
7 - RELAY COMMON	17 - DIGITAL IN 1
8 - RELAY OUT 1	18 - ANALOG IN 3 (-)
9 - RELAY OUT 2	19 - DIGITAL IN 2
10 - RELAY OUT 3	20 - ANALOG IN 2 (+)
11 - RELAY OUT 4	21 - DIGITAL IN 4
	31 - ANALOG IN 1 (-)
	32 - ANALOG IN 1 (+)

SERIES 9210 PINDOUT LABEL

COMBINATION ALARM  
PROGRAM ALARM  
ALARM #01  
ALARM #02  
FLOW DEVIATION ALARM

NOTE  
RES-129 AND RES-138  
ARE CUSTOMER SUPPLIED  
(1/4 WATT, 0.1% RESISTORS)

REFERENCE DRAWING(S)  
THIS DRAWING IS FURNISHED AS A  
GUIDELINE ONLY.  
FINAL INSTALLATION DIAGRAMS  
ARE THE RESPONSIBILITY OF OTHERS.  
**CONFIDENTIAL**

REV. A	ECD - 00412	GDG	24 MAR 2017	DATE	APPROVED
DESCRIPTION	SERIES 9210 NITRIDING AND TEMPERATURE CONTROL SYSTEM - RS-465 COMMUNICATIONS TO 5.7" DIT BASIC WIRING DIAGRAM				
DRAWN	GDG	27 FEB 2014	DATE	CHKD	APPROVED
ISSUED	DATE	ISSUED	SCALE	1:1	SHEET 01 OF 02
UNLESS OTHERWISE SPECIFIED DIMENSIONS ARE IN INCHES FRACTIONS DECIMALS ±1/64" X.XX=±0.100 X.XXX=±0.010 SPECIFICATIONS HEREIN IS STRICTLY PROHIBITED					
UNLESS OTHERWISE SPECIFIED DIMENSIONS ARE IN INCHES FRACTIONS DECIMALS ±1/64" X.XX=±0.100 X.XXX=±0.010 SPECIFICATIONS HEREIN IS STRICTLY PROHIBITED					
UNLESS OTHERWISE SPECIFIED DIMENSIONS ARE IN INCHES FRACTIONS DECIMALS ±1/64" X.XX=±0.100 X.XXX=±0.010 SPECIFICATIONS HEREIN IS STRICTLY PROHIBITED					



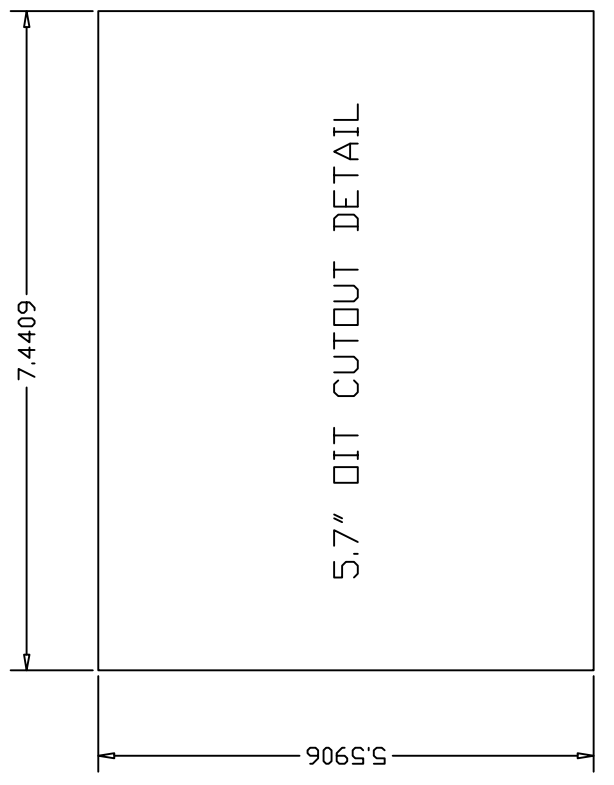
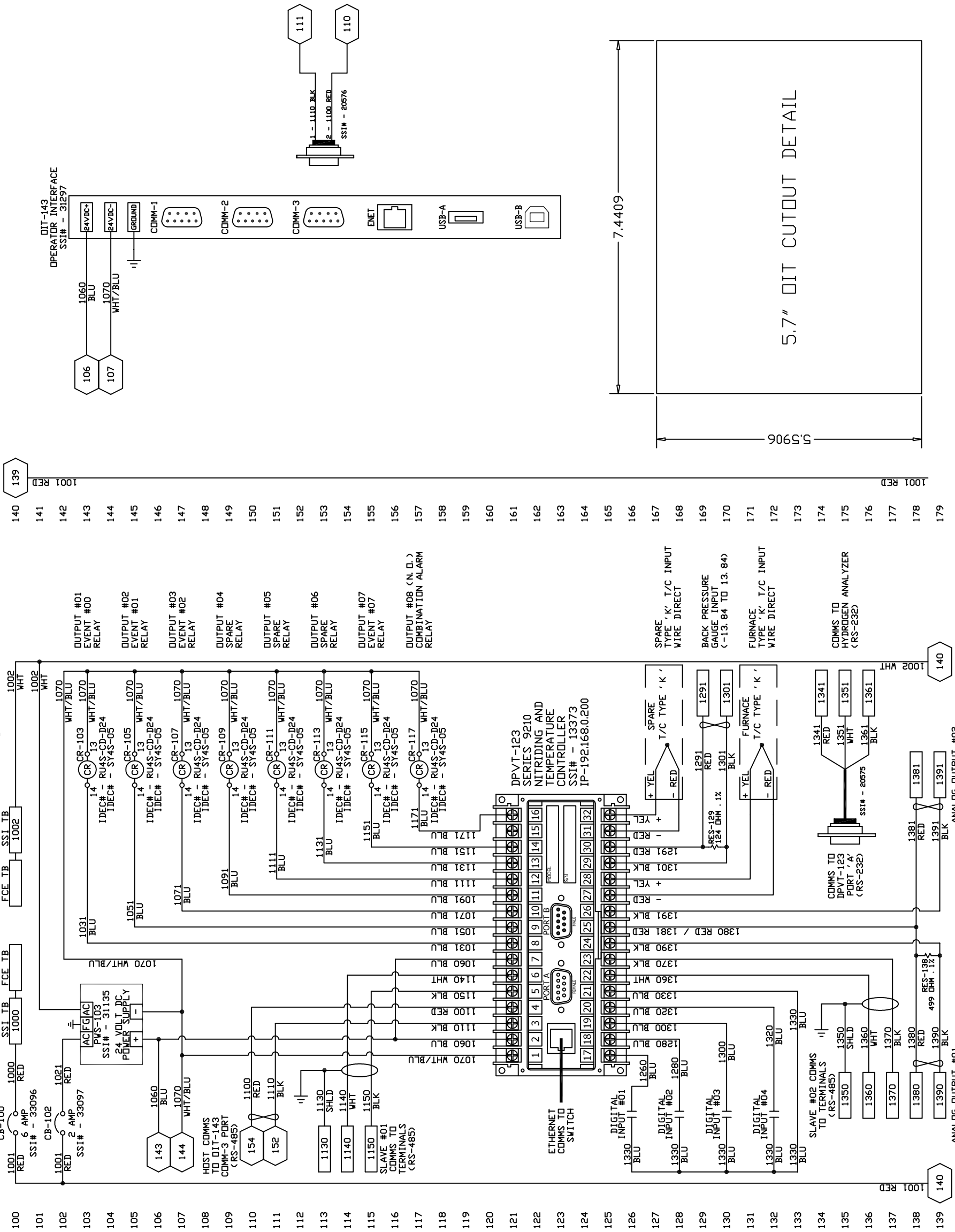
UNLESS OTHERWISE SPECIFIED DIMENSIONS ARE IN INCHES FRACTIONS DECIMALS ±1/64" X.XX=±0.100 X.XXX=±0.010 SPECIFICATIONS HEREIN IS STRICTLY PROHIBITED

139  
1002 WHT

139  
1001 RED

COMMS TO DPVT-123 (RS-485)

1002 WHT



5.7" DIT CUTOUT DETAIL