

Series 9XXX Configuration and Recipe Management Guide



Super**Systems**
incorporated

Super Systems Inc.

USA Office

Corporate Headquarters:

7205 Edington Drive

Shipping Address:

7245 Edington Drive

Cincinnati, OH 45249

Phone: (513) 772-0060

<http://www.supersystems.com>

Super Systems Europe

Unit E, Tyburn Trading Estate,

Ashold Farm Road, Birmingham

B24 9QG

UNITED KINGDOM

Phone: +44 (0) 121 306 5180

<http://www.supersystemseurope.com>

Super Systems México

Sistemas Superiores Integrales S de RL de CV

Acceso IV No. 31 Int. H Parque Industrial

Benito Juarez

C.P. 76120 Queretaro, Qro.

Phone: +52 442 210 2459

<http://www.supersystems.com.mx>

Super Systems China

No. 369 XianXia Road

Room 703

Shanghai, CHINA

200336

Phone: +86 21 5206 5701/2

<http://www.supersystems.cn>

Super Systems India Pvt. Ltd.

A-26 Mezzanine Floor, FIEE Complex,

Okhla Indl. Area, Phase - 2

New Delhi, India 110 020

Phone: +91 11 41050097

<http://www.supersystemsindia.com>

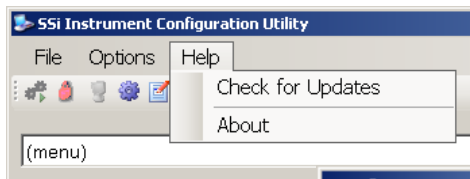
Table of Contents

Introduction.....	4
Instrument Configuration Management.....	4
Backup/Restore Tab.....	4
Backup Section.....	4
Comparison Section.....	6
Instrument Recipe Management.....	9
The Recipe Editor Button.....	9
Recipe Editor Tab.....	10
Load/Save Recipes.....	10
Modify Recipes.....	11
Recipe Management Tab.....	12
Groups Tab.....	12
Transfer Section.....	14
Printing Section.....	15
Archiving Instrument Configurations and Recipes.....	15
Revision History.....	16

Introduction

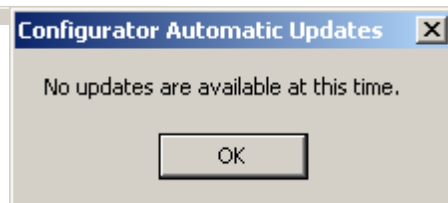
This guide covers the instrument configuration and recipe management functions for the SSI 9000 series instruments. Detailed information relating to individual instruments and additional functions can be found on SuperSystems' website:

<http://www.supersystems.com/manuals.html#miscmanuals>



Before proceeding with any instrument management operation, it is good practice to ensure that the Configurator software is up to date. To do this click on the Help menu item and then click Check for Updates.

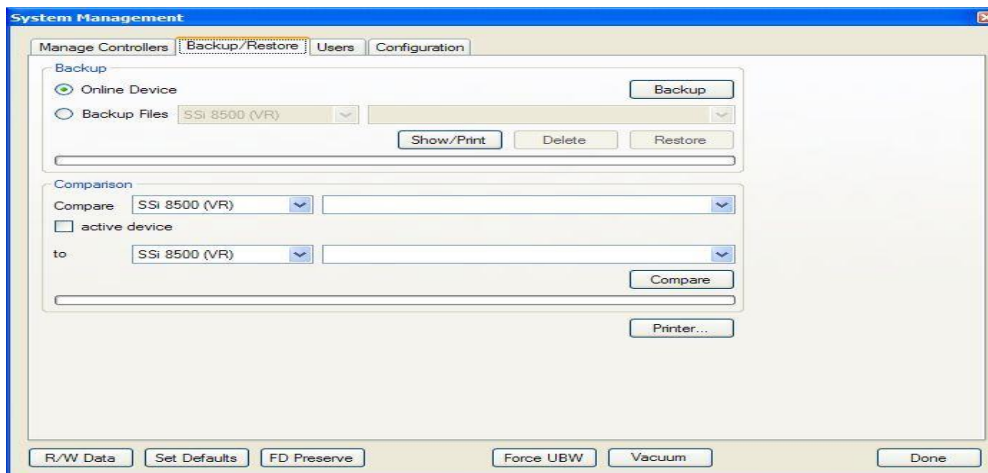
If the software is up to date then you are advised that no updates are available. Otherwise, the software will be updated, and you will be returned to the previous Configurator state.



to date then you are advised that no updates are available. Otherwise, the software will be updated, and you will be returned to the previous Configurator state.

Instrument Configuration Management

Backup/Restore Tab



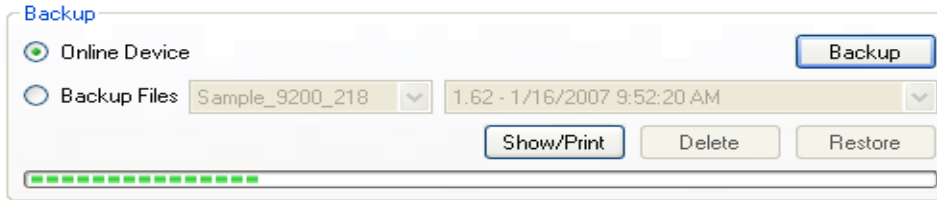
Configurator Backup/Restore Display

The Backup/Restore display allows the user to create a backup of a controller configuration or restore a controller to a previous configuration.

Backup Section

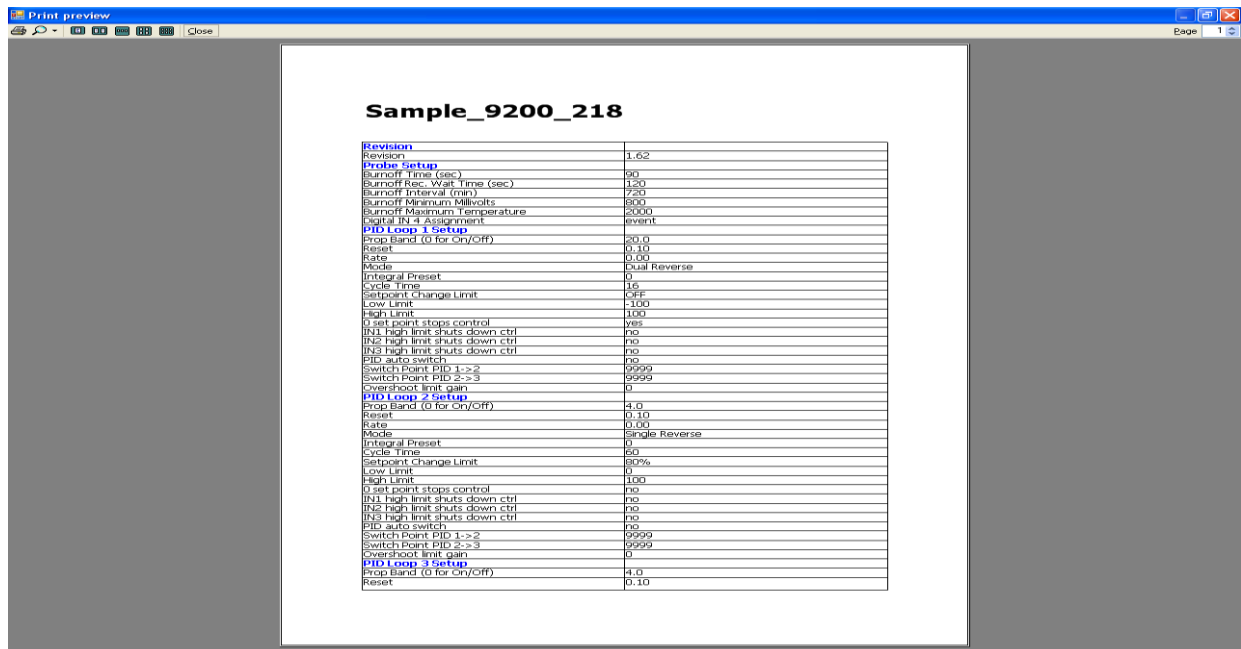
This area will allow the user to either backup the current controller or restore the current controller to a previous configuration. **Note: The user must be connected to a device before being able to backup or restore a configuration.** Selecting the "Online Device" option will allow

the user to backup the controller. Once this section is selected, the **Delete** and **Restore** buttons will become disabled, as well as the drop-down lists for the “Backup Files” section, as they deal only with backed-up configuration files. Clicking on the **Backup** button will back up the current configuration. The progress bar at the bottom of the section will update the backup progress.




Configurator – Backup Section with progress

The **Show/Print** button will display a print preview with the current controller’s configuration.

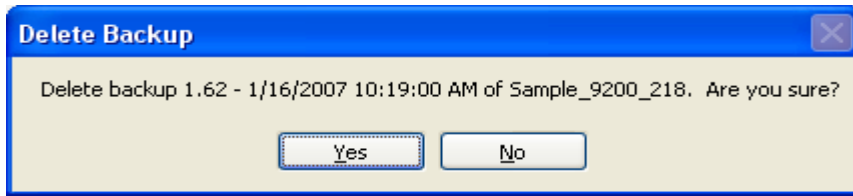


Configurator – Print Preview screen

From this screen, the user can either print out the configuration by clicking on the printer icon, , or close the print preview by clicking on the **Close** button or the red X button on the top right

of the screen, .

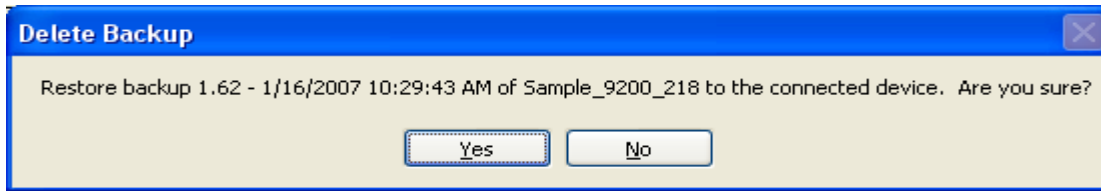
Selecting the “Backup Files” option will allow the user to manage the backup configurations on the local computer. When this option is selected, the **Backup** button will become disabled. The **Delete** button will delete the selected configuration. The user must confirm the delete first.



Configurator – Confirm Delete Backup file

Clicking on the **Yes** button will delete the configuration, but clicking on the **No** button will cancel the delete.

Clicking on the **Restore** button will restore a backup configuration to the connected device. The user must confirm the restoration.

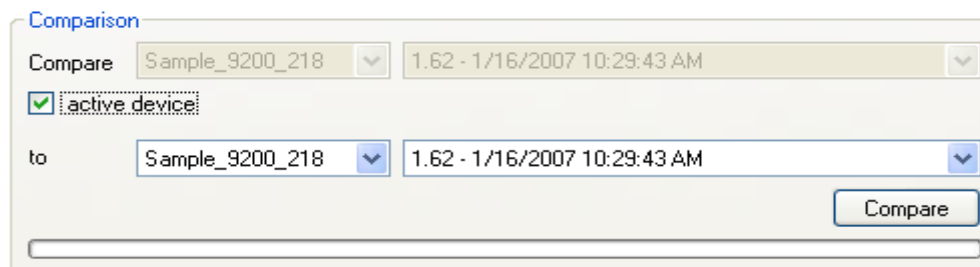


Configurator – Confirm Restore backup

Clicking on the **Yes** button will restore the selected configuration file, but clicking on the **No** button will cancel the restoration. The progress bar at the bottom of the section will update the restore progress.

Comparison Section

The Comparison section allows the user to compare two backup files to each other. **Note: The user must be connected to a controller if he/she wishes to use the active device for comparison.** If the user wishes to use the device the Configurator is connected to, the user can check the “Active Device” check box. This will disable the top two drop-down lists.



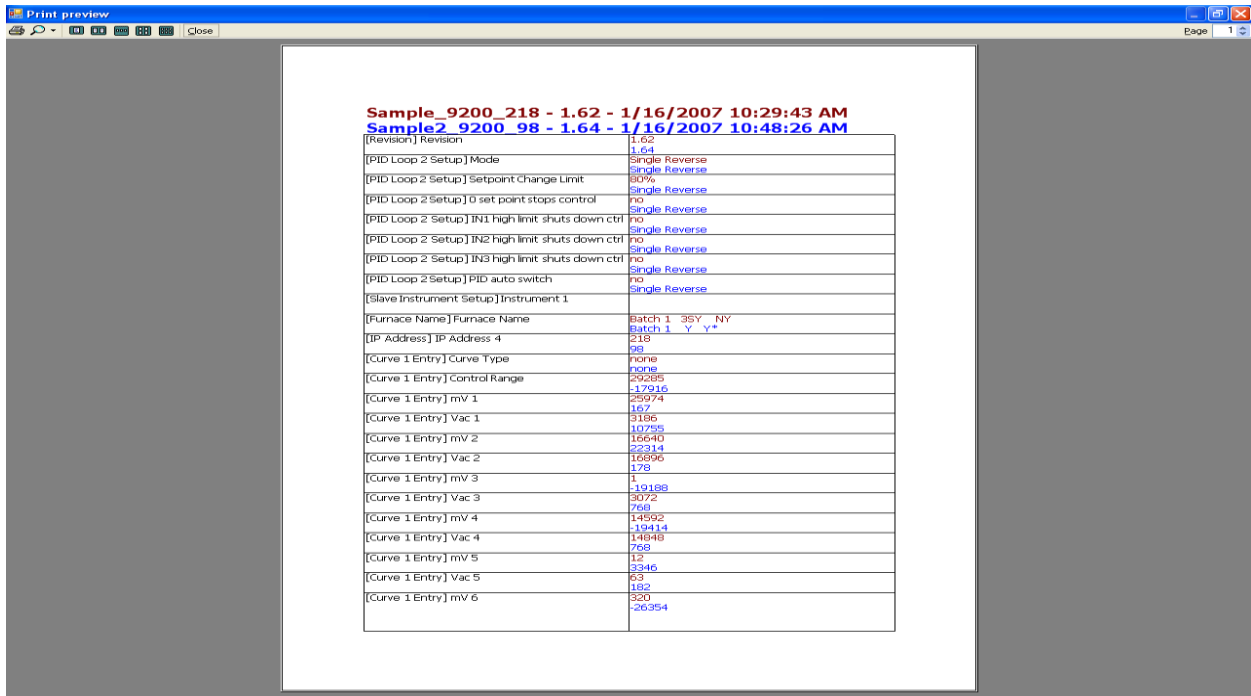
Configurator Compare section with “Active Device” checked

To compare a specific file with another, do not check the “Active Device” checkbox. If this checkbox is not checked, then all four drop-down lists will be enabled. The user can then select the device from the first drop-down list and the specific file for the comparison from the second drop-down list. The user can select the device where the file to compare to is from the third drop-down list, and the file to compare to can be selected from the fourth drop-down list. Once all of the necessary information has been setup, the user can click the **Compare** button. The progress bar at the bottom of the section will update the comparison. If the devices are identical, the Configurator will display a message box.



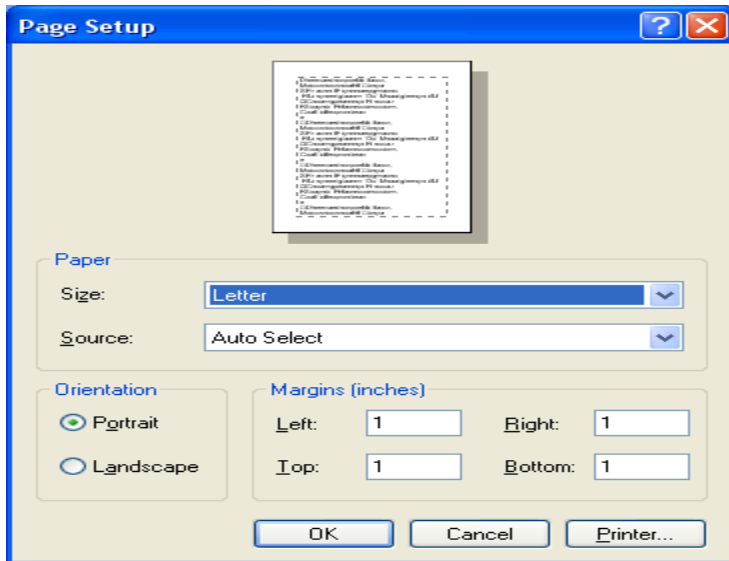
Configurator – Devices are identical message box

If the devices are different, the Configurator will display a print preview with the first device's values and properties printed in red, and the second device's values and properties printed in blue.



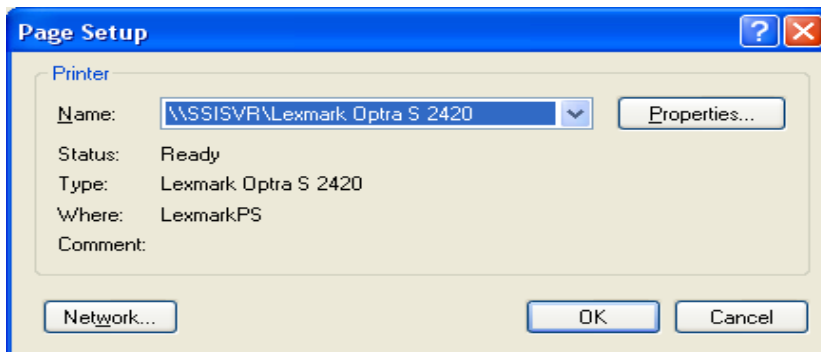
Configurator – Print Preview with different files

The **Printer...** button will allow the user to select page setup information for the printed documents. **Note: The printer settings are set to their defaults whenever Configurator loads. Any setting changes made through this button will not be saved.**



Configurator – Printer page setup screen

The user will be able to select the size and source of the paper, the orientation of the printed material, and the margins for the printed material. Clicking on the **OK** button will set the page settings. Clicking on the **Cancel** button will cancel the setup process. Clicking on the **Printer...** button will allow the user to select the printer to send the information to.



Configurator – Select Printer screen

The user will be able to select the appropriate printer from the drop-down list. Clicking on the **Properties...** button will display the properties for the selected printer. Clicking on the **Network** button will allow the user to search through the local network for a printer. Clicking the **OK** button will set the selected printer. Clicking the **Cancel** button will cancel the printer selection.

Instrument Recipe Management

The Recipe Editor Button

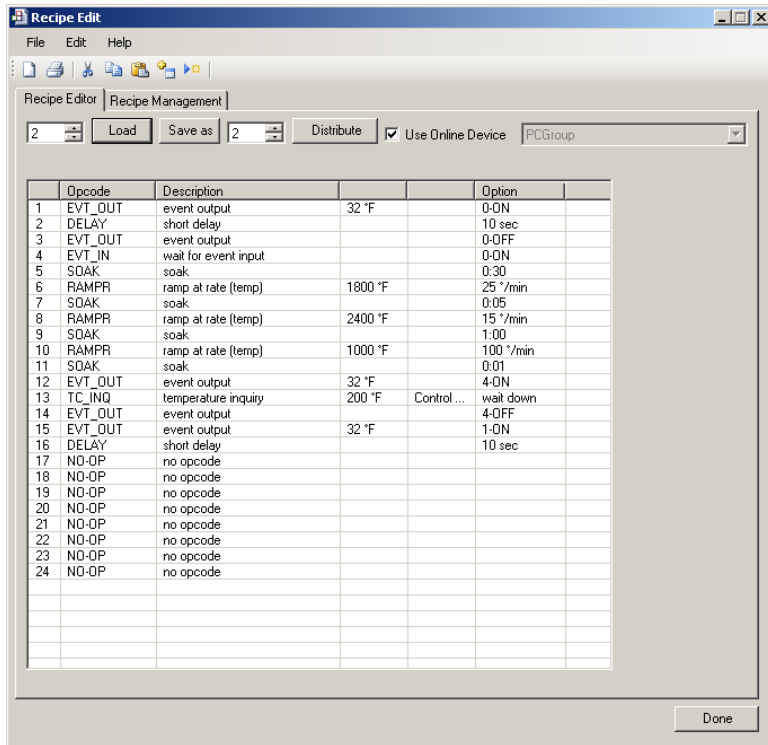


The Recipe Editor button is available to users of all access levels, however, users with Operator-level access cannot save recipes. This form allows users to manually edit a recipe. The toolbar at the top of the form contains the basic Windows-type functions, new, cut, copy, etc. The Windows-type shortcuts apply to most of the functions as well: Ctrl + C to copy, Ctrl + X to cut, etc. The menu will list the shortcut next to each command.



Configurator – Recipe Edit toolbar

From left to right are: New (load a blank recipe), Print (print out the recipe steps), Cut (cut a selected step), Copy (copy a selected step), Paste (paste the cut or copied step), Insert Step (inserts a selected step into the program and all steps below the inserted step will move down), Insert NO-OP Step (insert a NO-OP step into the program and all steps below the inserted step will move down), and Help (display a help page).



Configurator Recipe Editor Screen

Recipe Editor Tab

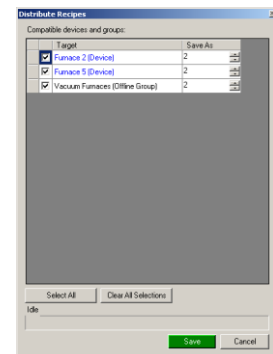
Load/Save Recipes

The box in the top left of the form is where the user can select which recipe (0 – 300) to load. Use the up or down arrows, or just type in the recipe number and click on the **Load** button. The recipe steps will be filled in the white area on the form. Once the **Load** button has been clicked, the box to the right of the **Save As** button will be filled with the recipe number selected. By default, the **Save As** recipe will be the same as the **Load** recipe. To save the loaded recipe as a different recipe number, use the up or down arrows, or just type in the new number (0 – 300) in the box next to the **Save As** button and click this button.

Checking the “Use Online Device” check box will load and save the recipes on the currently connected controller only. Not checking this check box will load and save the recipes on the local computer (PCGroup) only.

The **Distribute** button causes the recipe(s) to be saved to multiple destinations. When this button is clicked, the Distribute Recipes pick list will be presented. Select the desired destinations by clicking the checkbox and adjust the recipe number as required. When finished click **Save** and the distribution will commence.

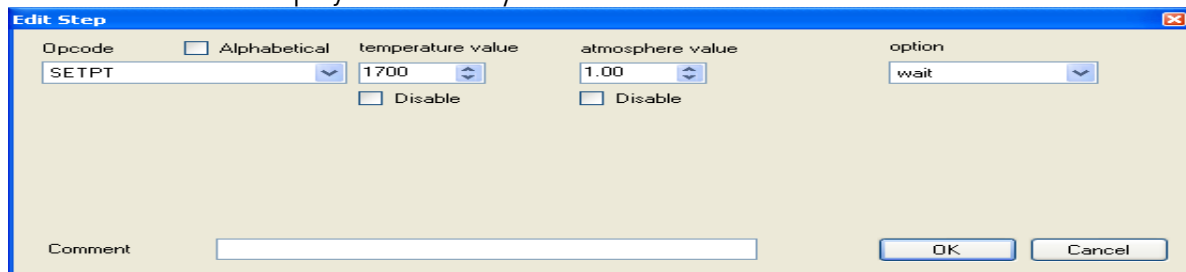
The progress bar at the bottom of the section will update the send process. **Note: Transferring recipes from or to a controller may take a few minutes.**



The "Recipe Description" line is a text description of the recipe. *Note: The recipe descriptions will only be saved if the recipes are being sent to a PC Group. When the recipe is sent to the controller, (Use online device selected), the description text is not transferred to the instrument.*

Modify Recipes

To modify any of the steps in the recipe, double-click on the row of the step that will be modified. This will display the *Edit Step* form.



Configurator Recipe Edit Step form

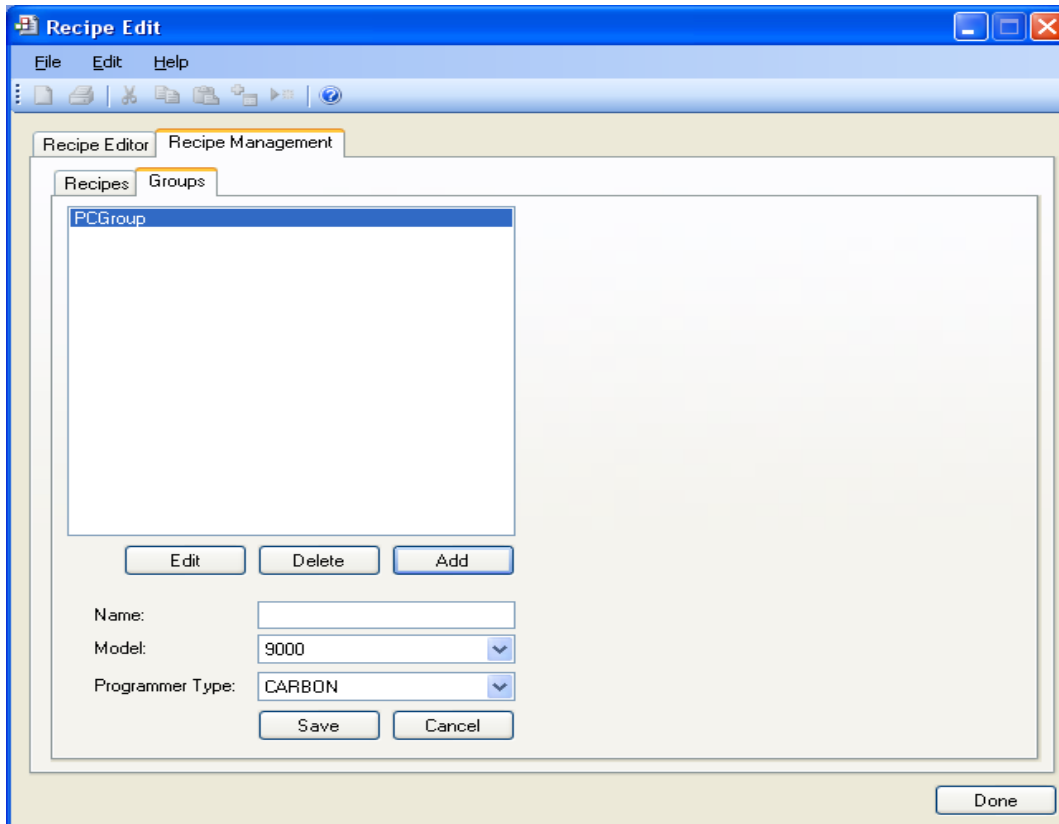
The drop-down list under "Opcode" allows the user to select the specific opcode that will be used in the recipe step. Checking the "Alphabetical" checkbox will allow the user to alphabetize the list. If a temperature value or an atmosphere value is needed, these can be set using the up or down arrows, or by just typing in the value. If these are not needed, check the "Disable" checkbox and the boxes will become unavailable. Note – for some opcodes, the display text will change and the *Edit Step* screen will look slightly different to accommodate the different types of values associated with each opcode, but the functionality of each item will remain the same.

The box(es) on the right side of the form is the action or value that should be taken. For instance, with opcode "SetPt", the box on the right is the "Option" and there is a drop-down list of available options: wait, wait up, wait down. However, for opcode "soak", the temperature value and atmosphere value fields disappear. The boxes on the right of the form are "Soak Time hours - minutes", and there are two boxes that have values ranging from **0** to **166** for the hours and **0** to **59** for the minutes. These values can be adjusted by using the up or down arrows, or by typing the new value in.

The user can add an optional comment to the recipe step in the "Comment" field, if desired. Once all of the changes have been made, the user can click on **OK** to save these changes.

Recipe Management Tab

Groups Tab



Configurator – Recipe Management tab with Groups tab selected

The Groups tab will allow the user to add, modify, or delete the offline groups of recipes.

Offline groups are used to sort recipes saved to the computer memory in meaningful categories such as Process – Carburizing, Tempering, etc. or Furnace type – Pit Furnace, Belt Furnace Vacuum Furnace, etc.

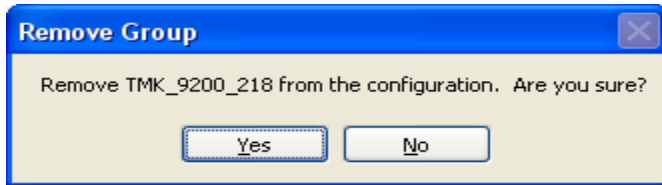
The offline recipe groups are used throughout the *Recipe Edit* screen, both on the Recipe Editor tab and the Recipe Management tab.

PCGroup is the default group loaded on initial startup.

To create a recipe group, click on the **Add** button. This will display the recipe group fields: Name, Model, and Programmer Type. Enter or select the desired values and click the **Save** button to save the new group, or click the **Cancel** button to cancel the add process.

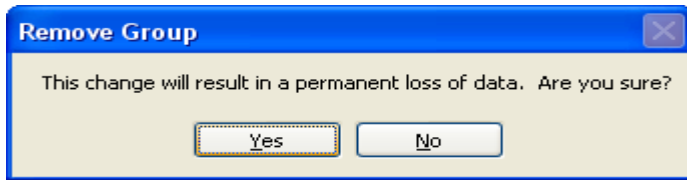
To edit a recipe group, click on the group name to edit from the list and click on the **Edit** buttons, or double-click the group name in the list. This will display the recipe group fields with the selected recipe group's information loaded. Modify the desired values and then click the **Save** button to save the changes, or click on the **Cancel** button to cancel the edit process.

To delete a recipe group name, click on the group name to delete and click on the **Delete** button. The user will have to confirm the delete.



Configurator – Confirm delete recipe group

Clicking on the **Yes** button will continue with the delete, while clicking on the **No** button will cancel the delete process. Since deleting a recipe group will result in the loss of data, the user will have to confirm the delete a second time.

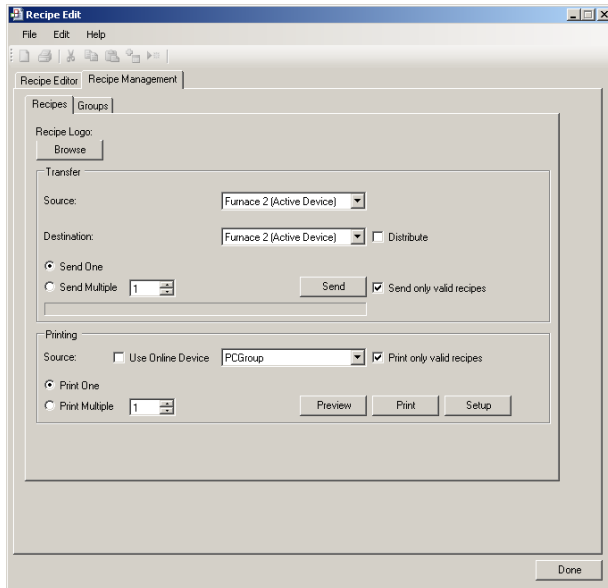


Configurator – Second confirm delete recipe group

Clicking on the **Yes** button will delete the recipe group, while clicking on the **No** button will cancel the delete process.

Clicking on the **Done** button will close the screen down.

Recipes Tab



Configurator – Recipe Management tab with Recipes tab

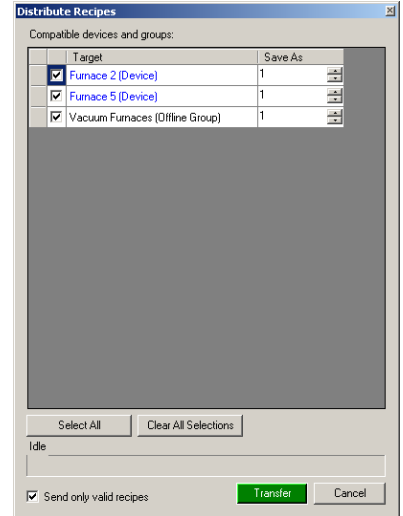
The “Recipe Logo:” Browse button will allow the user to select a bitmap (.bmp) image to act as a logo for the recipes. Clicking on the **Browse** button will open up a dialog box that will allow the user to browse to the desired picture.

Transfer Section

The Transfer section will allow the user to transfer one or more recipes from one location to another. The “Source” field could either be the currently connected device (“Use Online Device”), or one of the offline groups (“PCGroup”). The “Destination” field could either be the currently connected device (“Use Online Device”), or one of the offline groups (“PCGroup”). If the Distribute checkbox is selected the destination field will be grayed out indicating that transfer will be made to multiple recipients.

The “Send One” option will send only one recipe from the source to the destination. The recipe to send will be based upon the numeric value within the box next to the “Send Multiple” option. The “Send Multiple” option will send any number of sequential recipes from the source to the destination. When the “Send Multiple” option is selected, there will be another numeric value box visible next to the first numeric value box. This second box will be invisible when the “Send One” option is selected. Once all of the required information is present (source, destination, recipe to send), clicking on the **Send** button will send the recipes.

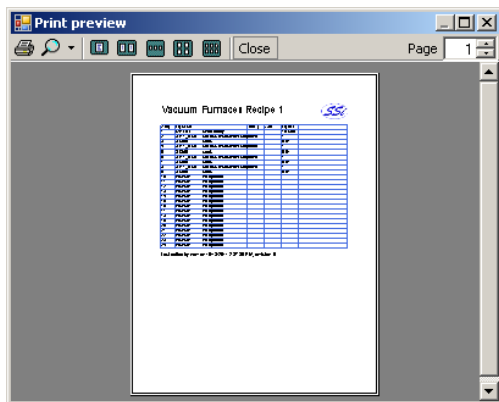
If the **Distribute** option has been selected a Distribute Recipes pick list will be presented. Select the desired destinations by clicking the checkbox and adjust the recipe number as required. When finished click Transfer and the distribution will commence.



The progress bar at the bottom of the section will update the send process. **Note: Transferring recipes from or to a controller may take a few minutes.**

Printing Section

The Printing section allows the user the ability to print out recipes. The “Source” field could either be the currently connected device (“Use Online Device”), or one of the offline groups (“PCGroup”). The “Print One” option will print only one recipe from the source. The recipe to print will be based upon the numeric value within the box next to the “Print Multiple” option. The “Print Multiple” option will print any number of sequential recipes from the source. When the “Print Multiple” option is selected, there will be another numeric value box visible next to the first numeric value box. This second box will be invisible when the “Print One” option is selected. Checking the Print Only Valid Recipes box prevents the printing of empty or corrupted recipe files.



Clicking on the **Print** button will display a print preview dialog, where the user will be able to view and/or print the recipes. Clicking on the **Setup** button will display a *Page Setup* screen, which will allow the user to set up the page settings for printing, as well as select the printer. **Note: Printing recipes from a controller may take a few minutes.**

Archiving Instrument Configurations and Recipes

Instrument configurations and recipes are stored in two directories. All instrument configurations are located in the C:\SSI\Devices directory and all recipes are located in the C:\SSI\Recipes directory. To backup these directories to a remote location or flash drive simply copy these two directories and then paste them to the desired location or drive.

Revision History

Rev.	Description	Date	MCO #
-	Initial Release	10/19/2011	2088