

# Series 9010 - eSPP

Communicates with basic set point temperature or carbon controllers enhancing your capabilities by running simple or complex heat treat recipes without replacing existing instrumentation

## Enhanced Set Point Programmer and Digital Chart Recorder



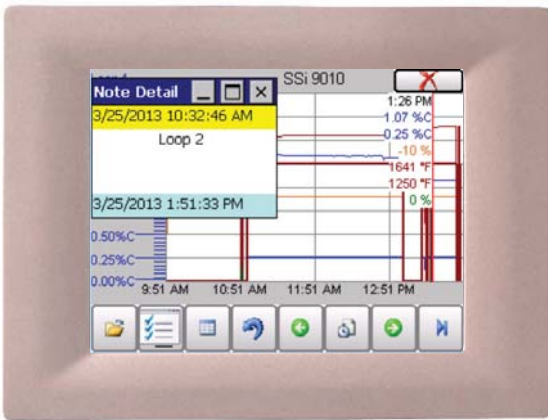
Available screen sizes: 3.5", 5.7", 12.1", 15", 17"

### eSPP Features

- Alarm log
- Easy to use recipe programmer
- Universal Modbus communications
- Configurable event management
- Digital data recorder
- Turn simple PID controls into programmable controls

### Model eSPP Includes

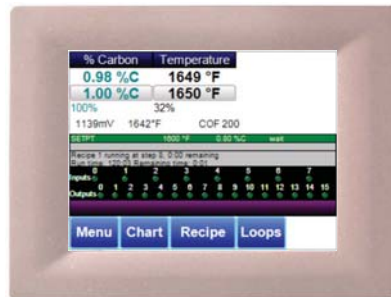
- Digital data recording / data logging / trend display
- Add handwritten or typed notes to trend charts
- Ethernet - Modbus TCP, RS232, RS485 (2) ports for SCADA interface
- Easily integrated into existing SCADA platform
- Universal recipe programmer
- Multi-language display
- Software drivers include: SSi, Honeywell, Eurotherm, Yokogawa, and MSI atmosphere and temperature controllers
- Setup for any Modbus communicating instrumentation
- Stores 300 heat treat recipes
- Easy editing of set point, soak times, and events
- Utility software for remote configuration of recipes and datalog reporting
- Applications include: batch, belt and pusher, pit, vacuum and temper furnaces
- 8 User defined events
  - Examples include: • Alarms • Probe Burnoff • Ammonia
  - End of Cycle • Force Cool



Built in Chart Recorder with Notes



- Load tracking in the controller
- Load history reports
- Remote software

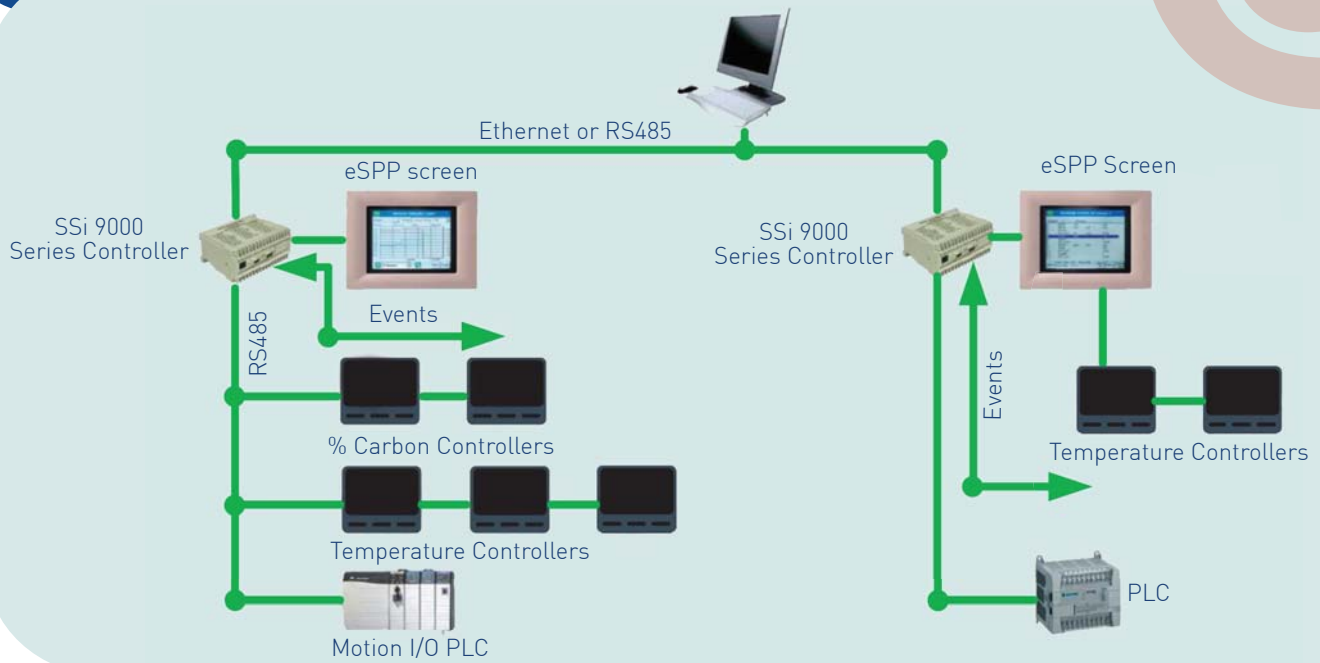


INNOVATIVE SOLUTIONS WORLDWIDE



Super Systems incorporated

# Communication Control Network



## Recipe Programmer

Typical "Program Status" Screen

- Program number running
- Showing full program
- Step number and segment type
- Atmosphere and temperature set points
- Event status
- Special instructions
- Current segment running
- Time remaining
- Time in segment
- Total program time

Advance	Hold	Stop	
1 - SETPT	1700 °F		wait
2 - SETPT	1700 °F	1.00 %C	wait
3 - SOAK			0.01
4 - EVT_OUT			3-ON
5 - SETPT	1600 °F		wait
6 - DELAY			5 sec
7 - EVT_OUT			3-OFF
8 - SETPT	1600 °F	0.80 %C	wait
9 - SOAK			0.01
10 - EVT_OUT			1-ON
11 - ALARM			User alarm 1
12 - EVT_OUT			1-OFF

Recipe 1 running at step 8, 0:00 remaining  
Run time: 102:07 Remaining time: 0:01

Load Return

Non-volatile  
flash memory  
data storage



(Format of flash memory  
may vary from that shown)



**SuperSystems**  
incorporated

7205 Edington Drive  
Cincinnati, OH 45249  
513.772.0060 **phone**  
513.772.9466 **fax**

## TS Manager

Data management for touch screen  
flashcard. Remote data viewer, remote  
screen control, historical data backup,  
SuperDATA integration.

