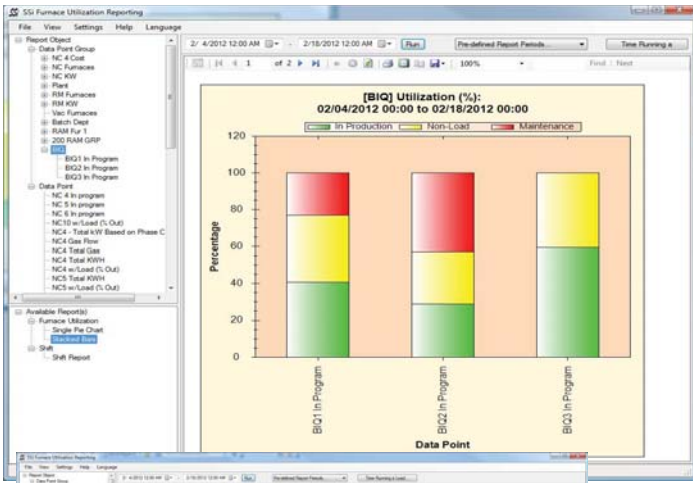


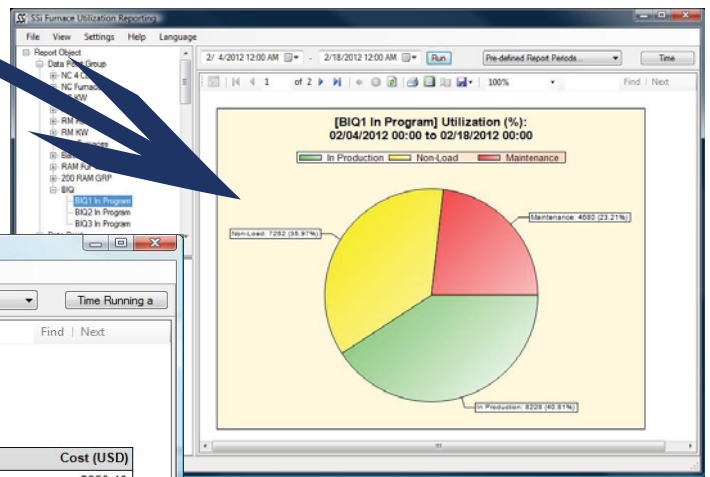
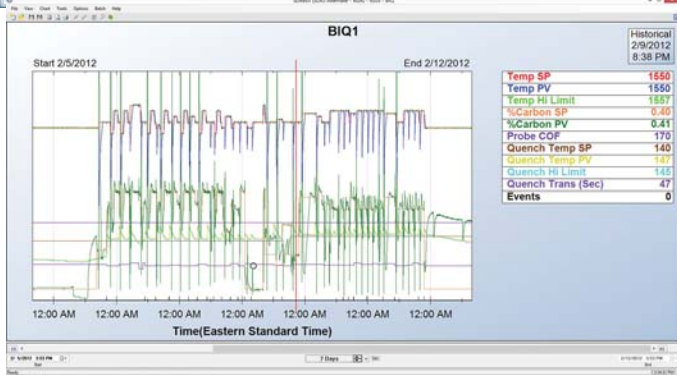


## Features & Functions

- Displays utilization by entire department or each piece of datalogged equipment in the department
- Uses historical data log files from compressed SuperDATA™ logs
- Logged data can be summarized
- Very flexible based on VB Scripting
- Turns tabular data into graphical data
- Gas flow totals by Furnace and Group
- Gas and electricity cost
  - Dollars by KW or SCF
  - ENDO, Natural Gas, Nitrogen, etc.
- Groups and data objects are used for ease of reporting, providing user-defined data for:
  - Furnace Type
  - Department
  - Line
  - Work Cell
- Cost per load reporting



Week Of	Monday	Tuesday	Wednesday	Thursday	Friday	Saturday	Sunday	Total
Week Of 1/29/2012	0	0	0	0	0	0	0	0
Week Of 2/05/2012	1039	1124	1111	1039	1039	723	0	5055
Week Of 2/12/2012	1150	1069	1069	1150	1150	2170	0	6758
<b>Total</b>	<b>2289</b>	<b>2193</b>	<b>2180</b>	<b>2189</b>	<b>2189</b>	<b>2893</b>	<b>0</b>	<b>14931</b>



Data Point	Total Gas Usage (SCF)	Cost (USD)
Energy Usage - BIQ52	14,210.50	\$250.10
<b>Totals</b>	<b>14,210.50</b>	<b>\$250.10</b>